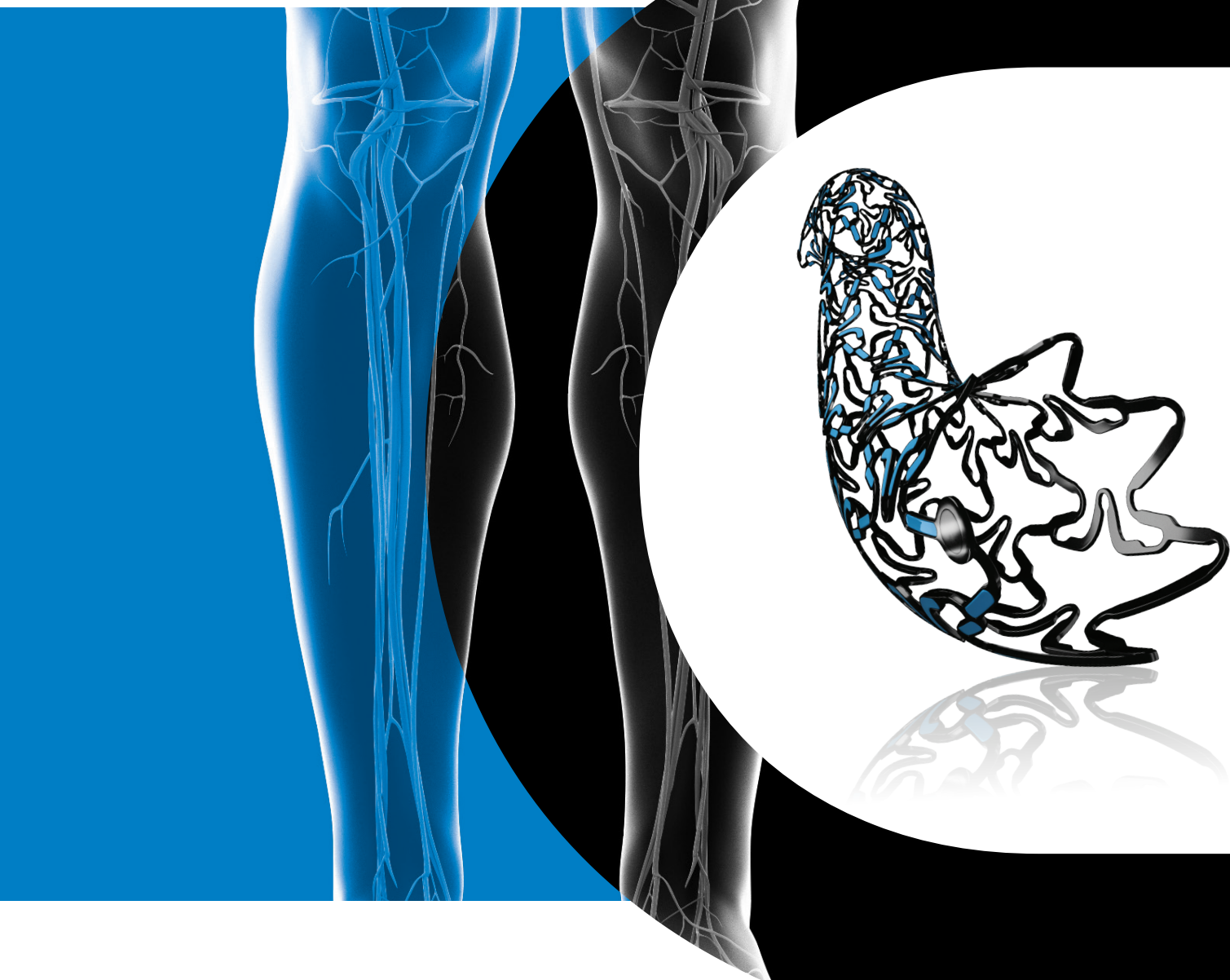




# Cre8™ BTK

BTK AMPHILIMUS™ ELUTING BX STENT

E N D O V A S C U L A R



THE PROPRIETARY POLYMER-FREE ABLUMINAL RESERVOIR TECHNOLOGY ALLOWS A SUSTAINED DRUG RELEASE, EXCLUSIVELY TOWARDS THE VESSEL WALL, UP TO 3 MONTHS

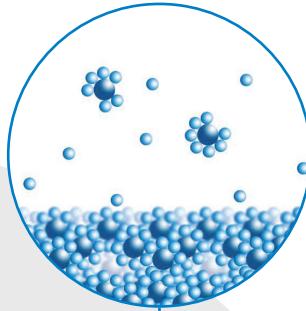
THE AMPHILIMUS™ FORMULATION (SIROLIMUS + FATTY ACID) ENHANCES DRUG BIOAVAILABILITY, PERMEABILITY AND MAXIMIZES PRODUCT OVERALL SAFETY AND EFFICACY

BIS COATING ACCELERATES ENDOTHELIALIZATION, REDUCES THROMBOGENICITY AND SEALS AGAINST HEAVY METAL IONS RELEASE

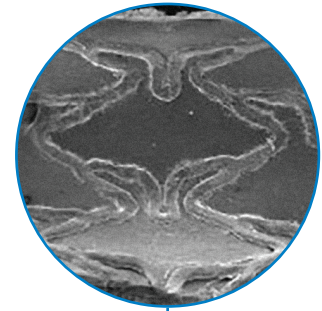
## UNIQUE FEATURES



The Abluminal Reservoir Technology allows a sustained drug release, exclusively towards the vessel wall, up to 3 months

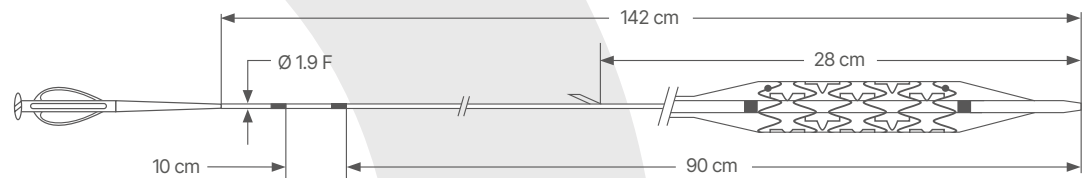


The Amphilimus™ formulation (Sirolimus + Fatty Acid) enhances drug bioavailability, permeability and maximizes safety and efficacy



BIS coating accelerates endothelialization, reduces thrombogenicity and seals against heavy metal ions release

## TECHNICAL DATA



### CATHETER SPECIFICATIONS

Category	Rapid Exchange Balloon delivery system
Guiding catheter compatibility	5F
Introducer sheath compatibility	4F
Guidewire compatibility	0.014"
Usable catheter length	142 cm
Proximal shaft	Stainless Steel AISI 304, low friction hypotube with Teflon coating
Distal shaft	Mix Polyamide/PEBA with hydrophilic coating
Nominal Pressure	9 atm
Rated Burst Pressure	18 atm

### DES SPECIFICATIONS

Category	Bio Inducer Surfaced Balloon Expandable Polymer-free DES
Material	Bio Inducer Surface coated L605 (CoCr alloy)
Drug eluting technology	Abluminal Reservoir Technology - Sustained elution up to 2-3 months
Strut thickness	70 µm - Ø 2.25 mm 80 µm - Ø 2.50-4.50 mm
Drug releasing	Amphilimus™ formulation Sirolimus + Fatty Acid
X-ray visibility	Two dot Platinum markers at stent ends
Foreshortening	Zero foreshortening during stent expansion

## ORDER INFORMATION

Ø (mm) \ L (mm)	8	12	16	20	25	31	38	46
2.25	ICLK22508	ICLK22512	ICLK22516	ICLK22520	ICLK22525	ICLK22531		
2.50	ICLK2508	ICLK2512	ICLK2516	ICLK2520	ICLK2525	ICLK2531	ICLK2538	ICLK2546
2.75	ICLK27508	ICLK27512	ICLK27516	ICLK27520	ICLK27525	ICLK27531	ICLK27538	ICLK27546
3.00	ICLK3008	ICLK3012	ICLK3016	ICLK3020	ICLK3025	ICLK3031	ICLK3038	ICLK3046
3.50	ICLK3508	ICLK3512	ICLK3516	ICLK3520	ICLK3525	ICLK3531	ICLK3538	ICLK3546
4.00	ICLK4008	ICLK4012	ICLK4016	ICLK4020	ICLK4025	ICLK4031	ICLK4038	
4.50		ICLK4512	ICLK4516	ICLK4520	ICLK4525	ICLK4531		



### CID S.p.A.

#### Manufacturer:

Viale Certosa 218 - 20156 Milano (MI) Italy

#### Manufacturing Facility:

Via Crescentino snc - 13040 Saluggia (VC) Italy

[www.cidvascular.com](http://www.cidvascular.com)

Please contact your local sales representative for product availability. The images shown within this document are of a purely illustrative nature and are not intended to depict reality. Please consult product labels and package inserts for indications, contraindications, hazards, warnings, cautions and instruction for use.