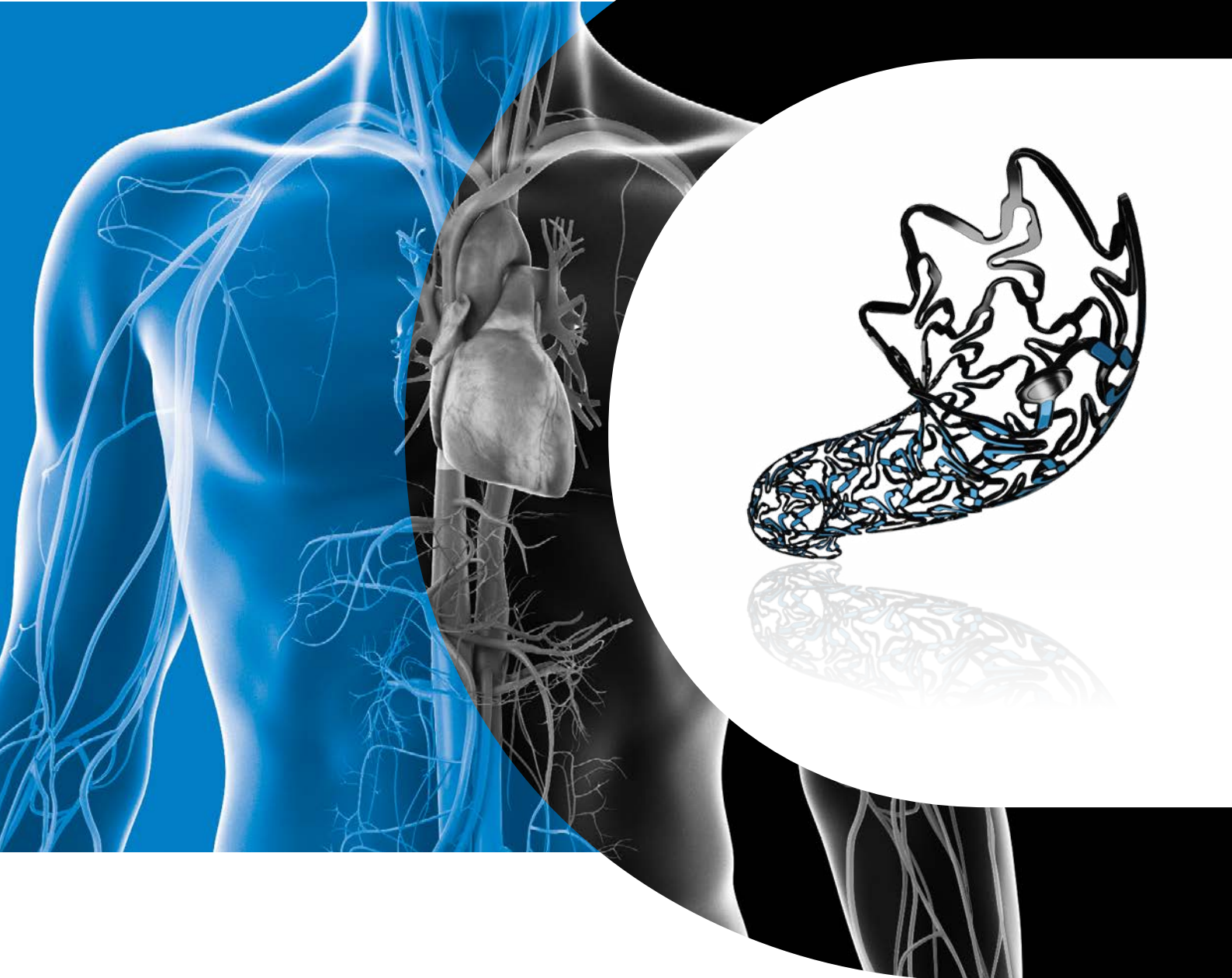




Cre8™

AMPHILIMUS™ ELUTING CORONARY STENT

I N T E R V E N T I O N A L C A R D I O L O G Y



THE ABLUMINAL RESERVOIR TECHNOLOGY ALLOWS A SUSTAINED DRUG RELEASE, EXCLUSIVELY TOWARDS THE VESSEL WALL, UP TO 3 MONTHS

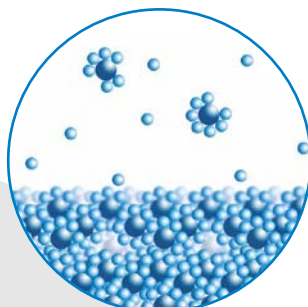
AMPHILIMUS™ FORMULATION (SIROLIMUS + FATTY ACID): MAXIMIZED EFFICACY, PARTICULARLY IN DM PATIENTS

BIS COATING ACCELERATES ENDOTHELIALIZATION, REDUCES THROMBOGENICITY AND SEALS AGAINST HEAVY METAL IONS RELEASE

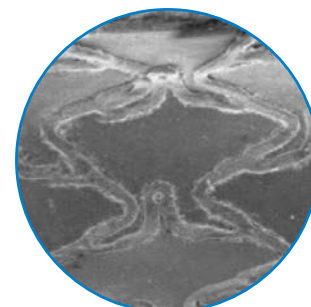
UNIQUE FEATURES



The Abluminal Reservoir Technology allows a sustained drug release, exclusively towards the vessel wall, up to 3 months

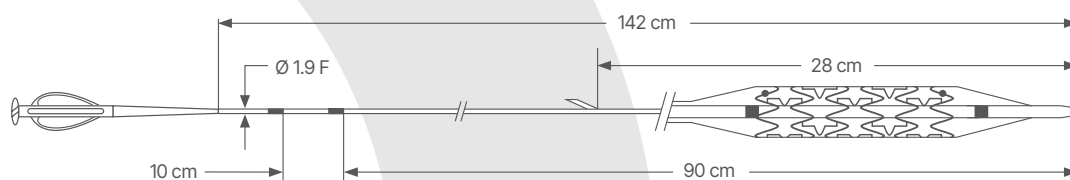


Amphilimus™ formulation (Sirolimus + Fatty Acid): Maximized efficacy, particularly in DM patients



BIS coating accelerates endothelialization, reduces thrombogenicity and seals against heavy metal ions release

TECHNICAL DATA



CATHETER SPECIFICATIONS	
Category	Rapid Exchange Balloon delivery system
Guiding catheter compatibility	5F
Guidewire compatibility	0.014"
Usable catheter length	142 cm
Proximal shaft	Stainless steel AISI 304, low friction hypotube with Teflon coating
Distal shaft	Mix Polyamide/PEBA with Hydrophilic coating
Nominal Pressure	9 atm
Rated Burst Pressure	18 atm

DES SPECIFICATIONS	
Category	Polymer-free DES
Material	Bio Inducer Surface coated L605 (CoCr alloy)
Drug eluting technology	Abluminal Reservoir Technology - Sustained elution up to 2-3 months
Strut thickness	70 µm - ø 2.25 mm 80 µm - ø 2.50-4.50 mm
Drug releasing	Amphilimus™ formulation Sirolimus + Fatty Acid
X-ray visibility	Two dot Platinum markers at stent ends
Foreshortening	Zero foreshortening during stent expansion

ORDER INFORMATION

Ø (mm) \ L (mm)	8	12	16	20	25	31	38	46
2.25	ICLI22508	ICLI22512	ICLI22516	ICLI22520	ICLI22525	ICLI22531		
2.50	ICLI2508	ICLI2512	ICLI2516	ICLI2520	ICLI2525	ICLI2531	ICLI2538	ICLI2546
2.75	ICLI27508	ICLI27512	ICLI27516	ICLI27520	ICLI27525	ICLI27531	ICLI27538	ICLI27546
3.00	ICLI3008	ICLI3012	ICLI3016	ICLI3020	ICLI3025	ICLI3031	ICLI3038	ICLI3046
3.50	ICLI3508	ICLI3512	ICLI3516	ICLI3520	ICLI3525	ICLI3531	ICLI3538	ICLI3546
4.00	ICLI4008	ICLI4012	ICLI4016	ICLI4020	ICLI4025	ICLI4031	ICLI4038	
4.50		ICLI4512	ICLI4516	ICLI4520	ICLI4525	ICLI4531		



Manufactured by
CID S.p.A.
 Via Crescentino snc
 13040 Saluggia (VC) ITALY

www.cidvascular.com

Please contact your local sales representative for product availability. The images shown within this document are of a purely illustrative nature and are not intended to depict reality. Please consult product labels and package inserts for indications, contraindications, hazards, warnings, cautions and instruction for use.