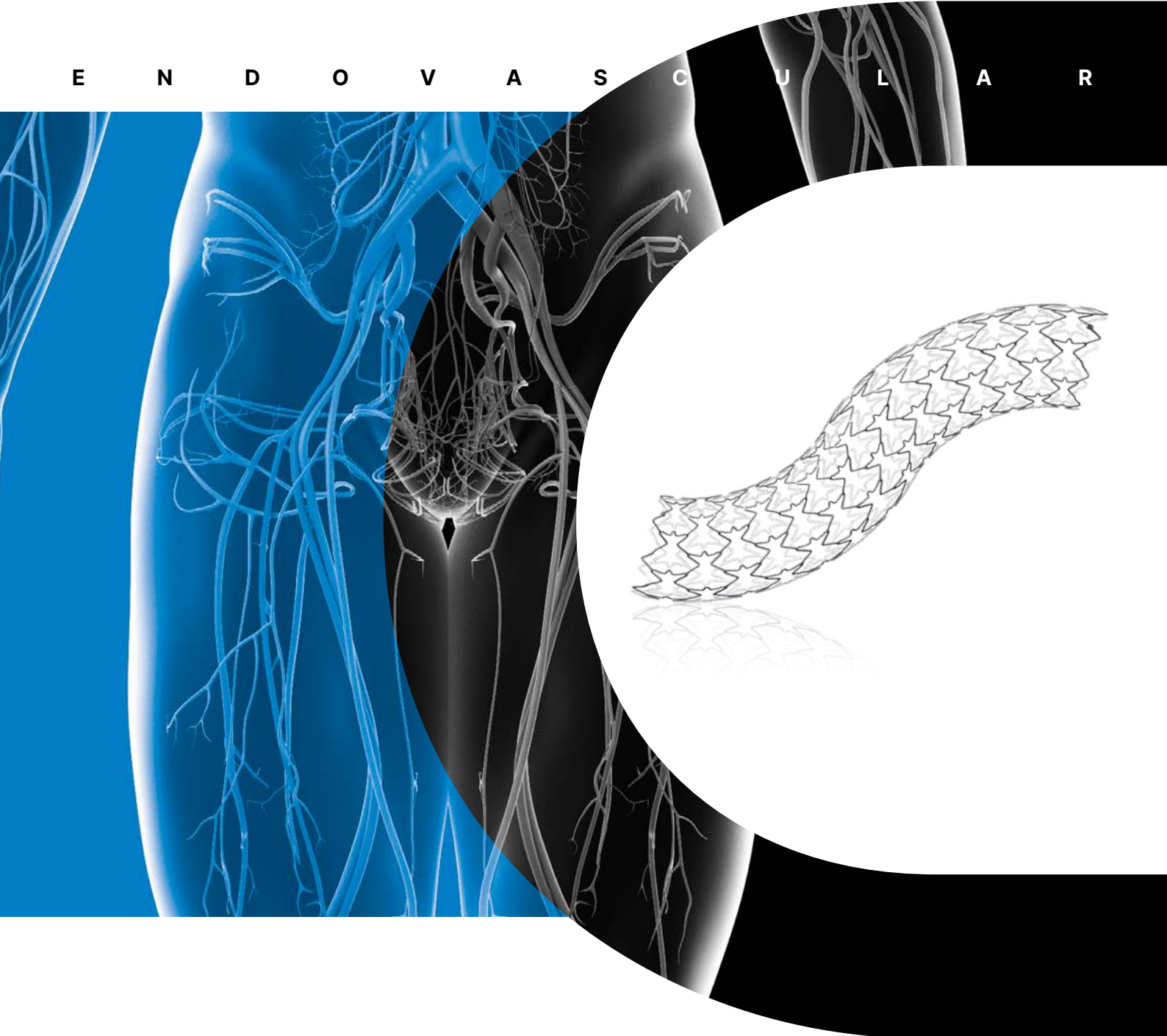




Isthmus Logic

ILIAC BALLOON EXPANDABLE STENT

E N D O V A S C U L A R

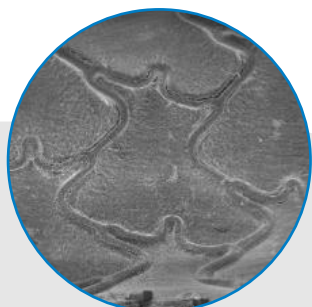


BIS COATING ACCELERATES
ENDOTHELIALIZATION, REDUCES
THROMBOGENICITY AND SEALS
AGAINST HEAVY METAL IONS RELEASE

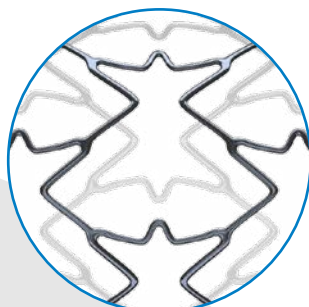
UNIFORM RADIAL FORCE AND
EXCELLENT SCAFFOLDING WITH
A UNIQUE CELL ARCHITECTURE

PLATINUM MARKERS AND NO
STENT FORESHORTENING ALLOW
UNMATCHED PLACEMENT AND
VISUALIZATION ACCURACY

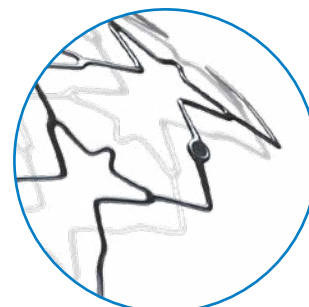
UNIQUE FEATURES



BIS coating accelerates endothelialization, reduces thrombogenicity and seals against heavy metal ions release

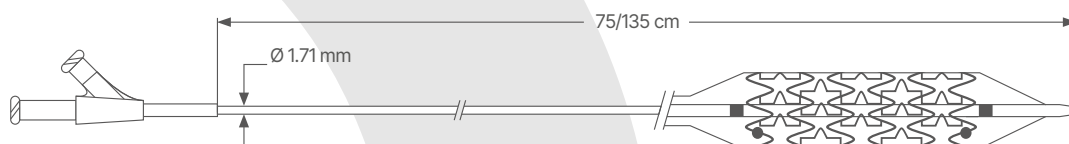


Uniform radial force and excellent scaffolding with a unique cell architecture



Platinum markers and no stent foreshortening allow unmatched placement and visualization accuracy

TECHNICAL DATA



CATHETER SPECIFICATIONS	
Category	Over The Wire (OTW) delivery system
Guiding catheter compatibility	6F
Guidewire compatibility	0.035"
Usable catheter length (UCL)	75 - 135 cm
Nominal Pressure	7 - 8 atm
Rated Burst Pressure	10 - 12 atm

STENT SPECIFICATIONS	
Category	Bio Inducer Surfaced Balloon Expandable BMS
Material	L605 (CoCr alloy)
Strut Coating	BIS - Bio Inducer Surface
X-ray visibility	Two dot Platinum markers at stent ends
Foreshortening	Zero foreshortening during stent expansion

ORDER INFORMATION

USABLE CATHETER LENGTH	Ø (mm) \ L (mm)	19	29	39	49	59									
		75 cm	6: ICLC6019S	7: ICLC7019S	8: ICLC8019S	9: ICLC9019S	10: ICLC10019S	6: ICLC6029S	7: ICLC7029S	8: ICLC8029S	9: ICLC9029S	10: ICLC10029S	6: ICLC6039S	7: ICLC7039S	8: ICLC8039S
135 cm	6: ICLC6019L	7: ICLC7019L	8: ICLC8019L	9: ICLC9019L	10: ICLC10019L	6: ICLC6029L	7: ICLC7029L	8: ICLC8029L	9: ICLC9029L	10: ICLC10029L	6: ICLC6039L	7: ICLC7039L	8: ICLC8039L	9: ICLC9039L	10: ICLC10039L



Manufactured by
CID S.p.A.
 Via Crescentino snc
 13040 Saluggia (VC) ITALY

www.cidvascular.com

Please contact your local sales representative for product availability. The images shown within this document are of a purely illustrative nature and are not intended to depict reality. Please consult product labels and package inserts for indications, contraindications, hazards, warnings, cautions and instruction for use.