



# Avantgarde

BIOINDUCER SURFACED CoCr BARE METAL STENT

I N T E R V E N T I O N A L C A R D I O L O G Y

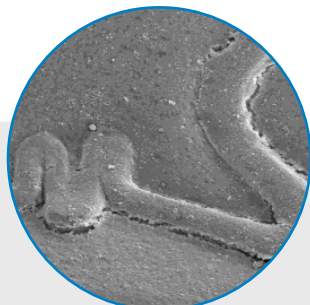


BIS COATING ACCELERATES  
ENDOTHELIALIZATION, REDUCES  
THROMBOGENICITY AND SEALS  
AGAINST HEAVY METAL IONS RELEASE

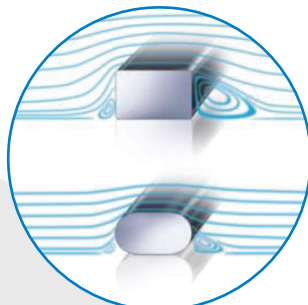
NEWLY ENGINEERED STENT  
STRUTS REDUCE THROMBOGENICITY  
IMPROVING BLOOD FLOW

PLATINUM MARKERS AND NO  
STENT FORESHORTENING ALLOW  
UNMATCHED PLACEMENT AND  
VISUALIZATION ACCURACY

## UNIQUE FEATURES



BIS coating accelerates endothelialization, reduces thrombogenicity and seals against heavy metal ions release

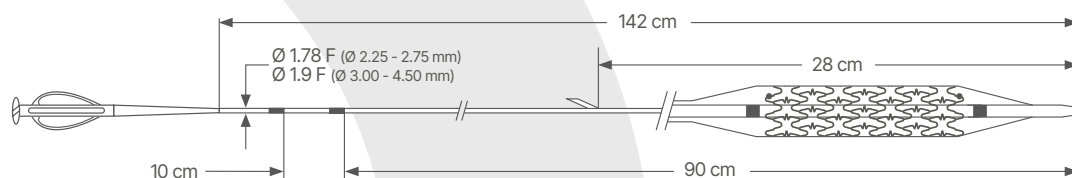


Newly engineered stent struts reduce thrombogenicity improving blood flow



Platinum markers and no stent foreshortening allow unmatched placement and visualization accuracy

## TECHNICAL DATA



| CATHETER SPECIFICATIONS        |   |
|--------------------------------|---|
| Category                       | Rapid Exchange Balloon delivery system                              |
| Guiding catheter compatibility | 5F  |
| Guidewire compatibility        | 0.014"  |
| Usable catheter length         | 142 cm  |
| Proximal shaft                 | Stainless Steel AISI 304, low friction hypotube with Teflon coating |
| Distal shaft                   | Mix Polyamide/PEBA with hydrophilic coating                         |
| Nominal Pressure               | 9 atm   |
| Rated Burst Pressure           | 18 atm  |

| STENT SPECIFICATIONS |  |
|----------------------|--|
| Category             | Bio Inducer Surfaced BMS                         |
| Material             | L605 (CoCr alloy)                                |
| Strut coating        | BIS - Bio Inducer Surface                        |
| Strut thickness      | 70 µm - Ø 2.25-2.75 mm<br>80 µm - Ø 3.00-4.50 mm |
| X-ray visibility     | Two dot Platinum markers at stent ends           |
| Foreshortening       | Zero foreshortening during stent expansion       |

## ORDER INFORMATION

| Ø (mm) \ L (mm) | 7       | 8       | 12      | 16      | 20      | 24      | 25      | 31      |
|-----------------|---------|---------|---------|---------|---------|---------|---------|---------|
| 2.25            | ICV9601 |         | ICV9602 | ICV9603 | ICV9604 | ICV9605 |         |         |
| 2.50            |         | ICV9606 | ICV9607 | ICV9608 | ICV9609 |         | ICV9610 |         |
| 2.75            |         | ICV9611 | ICV9612 | ICV9613 | ICV9614 |         | ICV9615 |         |
| 3.00            |         | ICV9616 | ICV9617 | ICV9618 | ICV9619 |         | ICV9620 | ICV9621 |
| 3.50            |         | ICV9622 | ICV9623 | ICV9624 | ICV9625 |         | ICV9626 | ICV9627 |
| 4.00            |         | ICV9628 | ICV9629 | ICV9630 | ICV9631 |         | ICV9632 | ICV9633 |
| 4.50            |         |         | ICV9634 | ICV9635 | ICV9636 |         | ICV9637 | ICV9638 |



### CID S.p.A.

#### Manufacturer:

Viale Certosa 218 - 20156 Milano (MI) Italy

#### Manufacturing Facility:

Via Crescentino snc - 13040 Saluggia (VC) Italy

[www.cidvascular.com](http://www.cidvascular.com)

Please contact your local sales representative for product availability. The images shown within this document are of a purely illustrative nature and are not intended to depict reality. Please consult product labels and package inserts for indications, contraindications, hazards, warnings, cautions and instruction for use.